

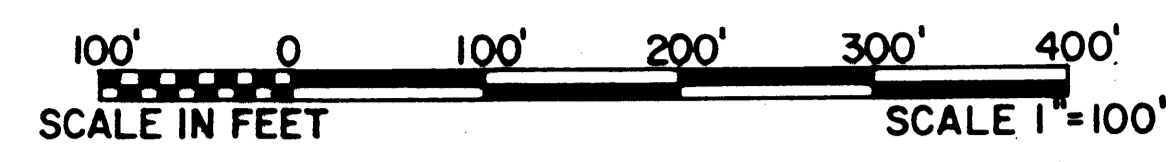
OLD TRAIL P.U.D. - PHASE 2

IN PART OF SECTIONS 23 AND 24, TOWNSHIP 40 SOUTH, RANGE 41 EAST
MARTIN COUNTY, FLORIDA

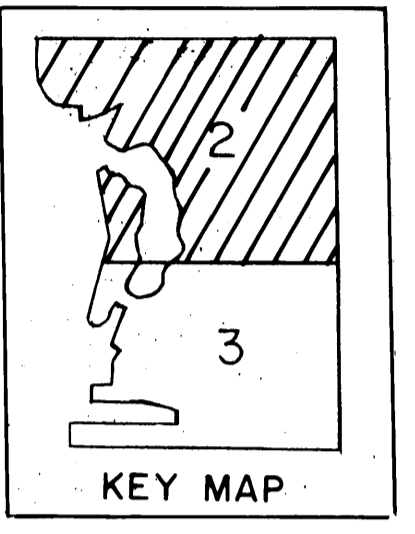
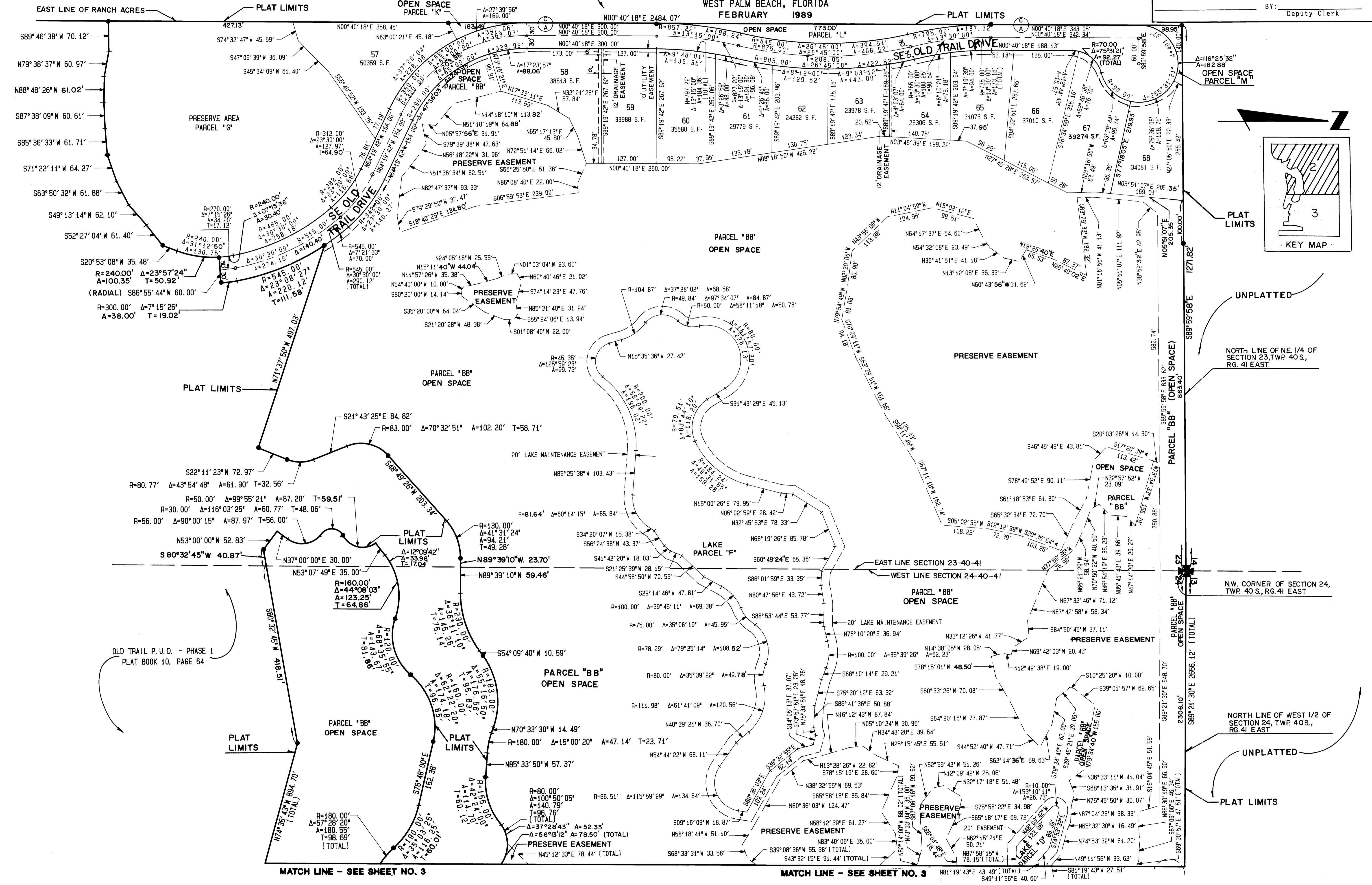
GEE & JENSON
ENGINEERS - ARCHITECTS - PLANNERS, INC.
WEST PALM BEACH, FLORIDA
FEBRUARY 1989

I, Marsha Stiller, Clerk of the Circuit Court of Martin County, Florida, hereby certify that this plat was filed for record in Plat Book 11, Page 96, Martin County, Florida Public Records, this 16th day of February, 1989 A.D.

MARSHA STILLER, CLERK
CIRCUIT COURT,
MARTIN COUNTY, FLORIDA
BY: Deputy Clerk



RANCH ACRES
PB. 9, PG. 25



COMPUTED	D.F.B.
DRAWN	D.F.B.
CHECKED	D.W.L.
COMMENTS	
APPROVED	
REVISION	

OLD TRAIL P.U.D. - PHASE 1
PLAT BOOK 10, PAGE 64

MATCH LINE - SEE SHEET NO. 3

MATCH LINE - SEE SHEET NO. 3

UNPLATTED

UNPLATTED

NORTH LINE OF NE 1/4 OF SECTION 23, TWP. 40S., RG. 41 EAST.

NW CORNER OF SECTION 24, TWP. 40S., RG. 41 EAST.

NORTH LINE OF WEST 1/2 OF SECTION 24, TWP. 40S., RG. 41 EAST.

UNPLATTED

UNPLATTED